

# FORECAST WINDFIELDS TO 120hrs LEAD

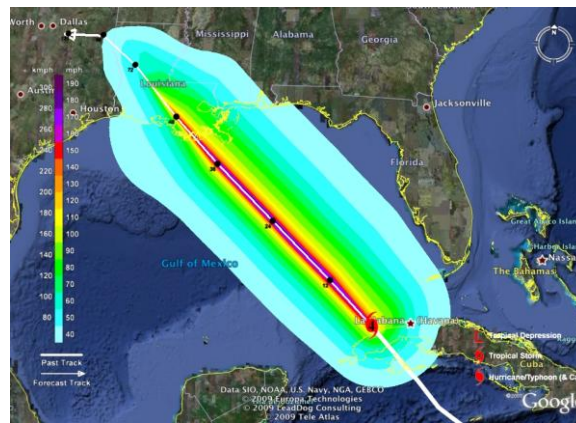
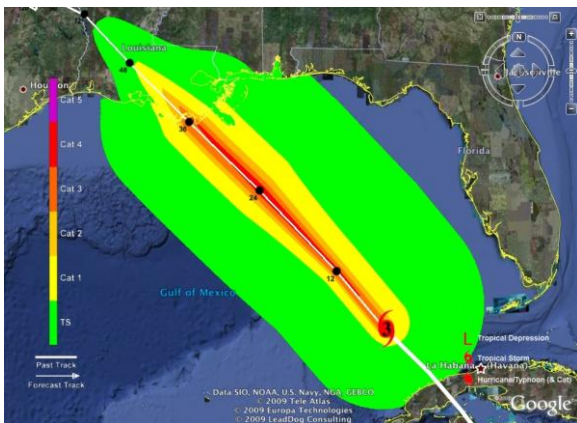
Tropical Storm Risk (TSR) Business works with the insurance industry around the world to help its clients manage the real-time risks associated with live tropical storms. As part of its range of subscription products TSR offers forecast windfield and gustfield datasets to 120 hrs lead. These products provide high accuracy, information content and timeliness of delivery.

## Business Benefits

High accuracy and timely forecast windfields are critical to delivering:

- Clear and rapid assessment of potential business impact.
- Early and more accurate potential loss estimation.
- Reliable information for the Board.
- Effective pre-event planning.

## Key Features

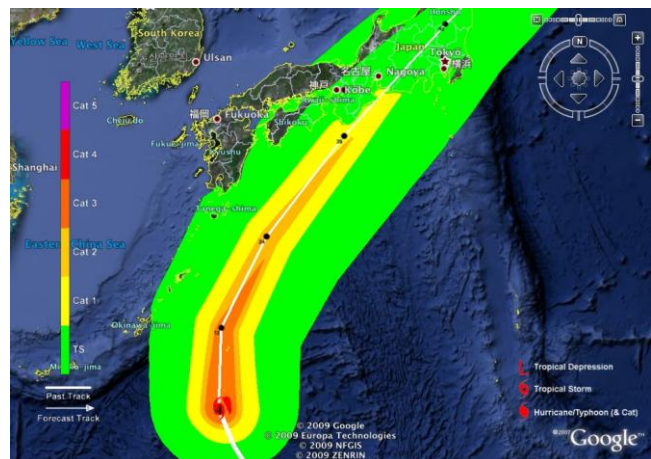


*Product examples for Hurricane Gustav (2008). TSR forecast wind swathe (left) and TSR forecast gust swathe (right) issued at 09UT and 03UT respectively on 31<sup>st</sup> August 2008.*

- Maps the most likely (or deterministic) forecast wind swathe and gust swathe out to 5 days lead.
- Available as either a one minute sustained wind or as a three second maximum gust.
- User-friendly display with wind contours colour-coded at a range of thresholds up to Cat 5 strength (one minute sustained wind) and up to 190mph at 10mph intervals (3-sec maximum gust).
- Includes storm current position and intensity, storm past and forecast tracks, and lead times along the storm forecast track.
- Includes surface roughness correction at landfall, displays far more detailed wind and gust information than available elsewhere, and operates at just 2 km spatial resolution.

## Accuracy, Timeliness and Availability

- High accuracy wind modeling (assessed against post-event station wind observations 2004-2009).
- Real-time products issued within 10 mins of a public forecast advisory.
- Updates occur every 6 hrs (12 hrs for Southern Hemisphere tropical cyclones).
- Available for tropical cyclones worldwide.
- Available in a choice of four GIS formats for display on different Earth-mapping platforms and risk mapping software.
- Historical product data available online from February 2008.



*TSR forecast surface wind swathe (above) for typhoon Melor issued at 06UT on 6<sup>th</sup> October 2009.*

For more information including a free 7-day online trial please either go to [www.tropicalstormrisk.com/business](http://www.tropicalstormrisk.com/business) or contact Prof Mark Saunders on +44 (0)1483 204187 or [Mark.Saunders@tropicalstormrisk.com](mailto:Mark.Saunders@tropicalstormrisk.com).